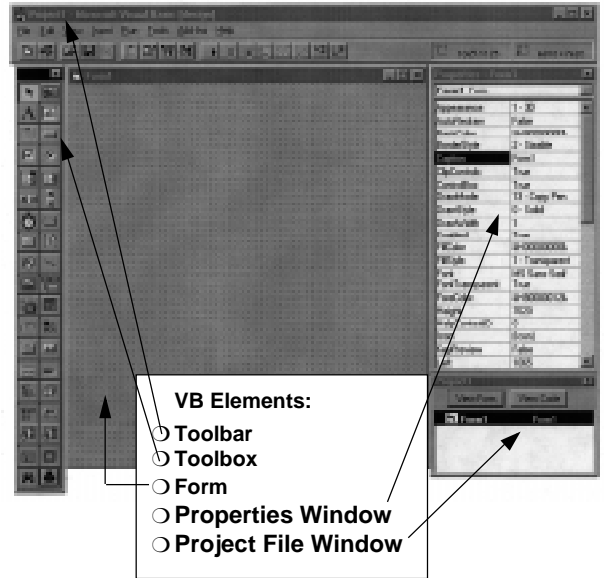
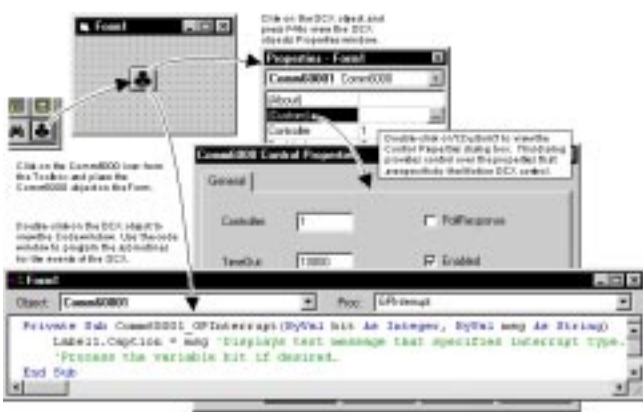


Motion OCX Toolkit

Parker's Motion OCX Toolkit is a powerful stand alone software package that allows the programmer to easily and effectively develop virtual instrument interfaces for the AT6000 Series Bus-based controllers (i.e., AT6200/AT6400 and AT6250/AT6450).

The Motion OCX Toolkit provides programmers with an easy way to incorporate advanced functionality into their applications, with little or no programming. It also includes three OCX custom controls, which are loaded directly into the development environment's toolbox palette. With this application development tool, an operator interface can be built by simply clicking on the palette and placing the pre-designed object on a form.



Motion OCX Toolkit facilitates the quick development of your custom operator interface to Parker's 6000 Series bus-based controllers. Motion OCX Toolkit includes these controls:

- Communications Shell (OCX (Comm6000))
Use Comm6000 to control basic communication with the 6000 product, including interrupt handling and sending/receiving files.
- Terminal OCX (Term6000)
Use Term6000's active communication interface to the 6000 product for executing 6000 commands, checking program responses and status reps, and viewing error messages.
- Fast-Status Polling OCX (Poll6000)
Use Poll6000 to poll the 6000 product's fast status register and display information such as position, velocity, axis status, system status, etc.

Each control has a custom properties dialogue box for easy set up. There is also a registration utility that can check for 6000 controller registration information in the windows registry and enter or change parameters.

The programmer does not have to bother with the details of syntax associated with implementing Dynamic Link Libraries (DLLs) into their code. With this burden removed, programmers can concentrate solely on their applications. Novice and advanced virtual instrument programmers will appreciate the flexibility and functionality of the new Motion OCX Toolkit.

Motion OCX Toolkit provides a 32-bit OLE Custom Control Extension (OCX) designed to run under Windows 95 or Windows NT and the following development environments.

- Visual Basic 4.0 or later
- Delphi 2.0 or later
- Visual C++
- Any other 32-bit development environment containing OCX controls.

OCX controls, also known as an OLE (Object Linking and Embedding) Custom Controls, are the latest addition to Microsoft®'s OLE family. The controls provide unprecedented compatibility with almost any virtual instrument application. Motion OCX Toolkit makes DLLs a thing of the past.