



D Floor

Floor Brackets and Feet

Floor Mounting Brackets	2-3
Leveling Floor Mounting Bracket	4
Leveling Feet	6
Base Plates	7
Anchor Plates	8
Corner Anchor/Leveling Plate	9

Casters

Casters	10
Caster Mounting Plate	11

Floor Mounting Brackets are used to attach extrusion profiles to the floor. The brackets allow height adjustment (for leveling).

Material: 6061-T6 Aluminum Alloy, Clear Anodized

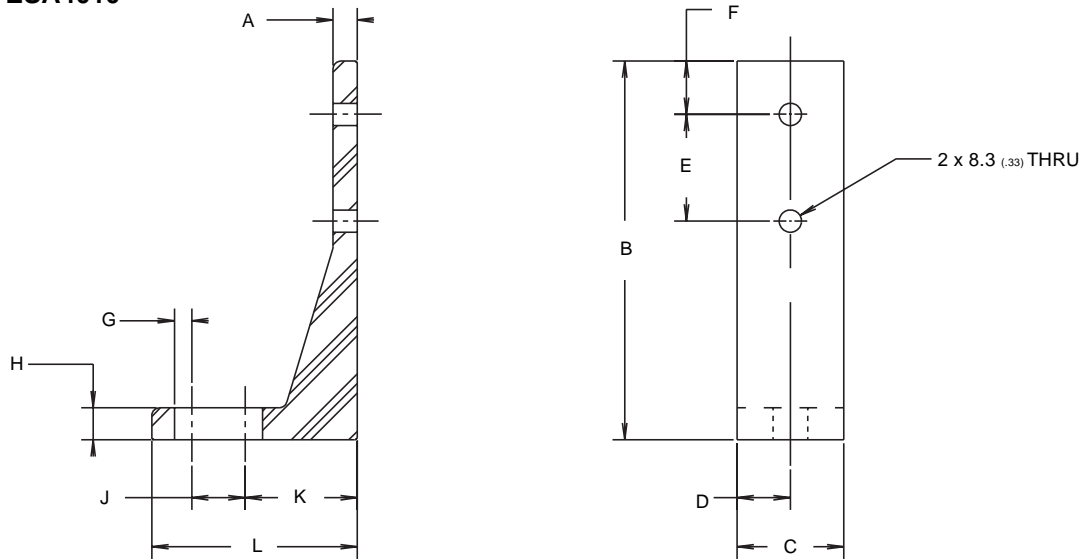
Note: Consult factory for use with 28 x 56 profiles.

Part No.	Description	Fastener Holes	Weight	
			kg	lb
ESA4010	40 x 40 and 40 x 80	2	.49	1.07
ESA8010	40 x 80 and 80 x 80	4	1.00	2.19



Dimensional Data

ESA2810 and ESA4010

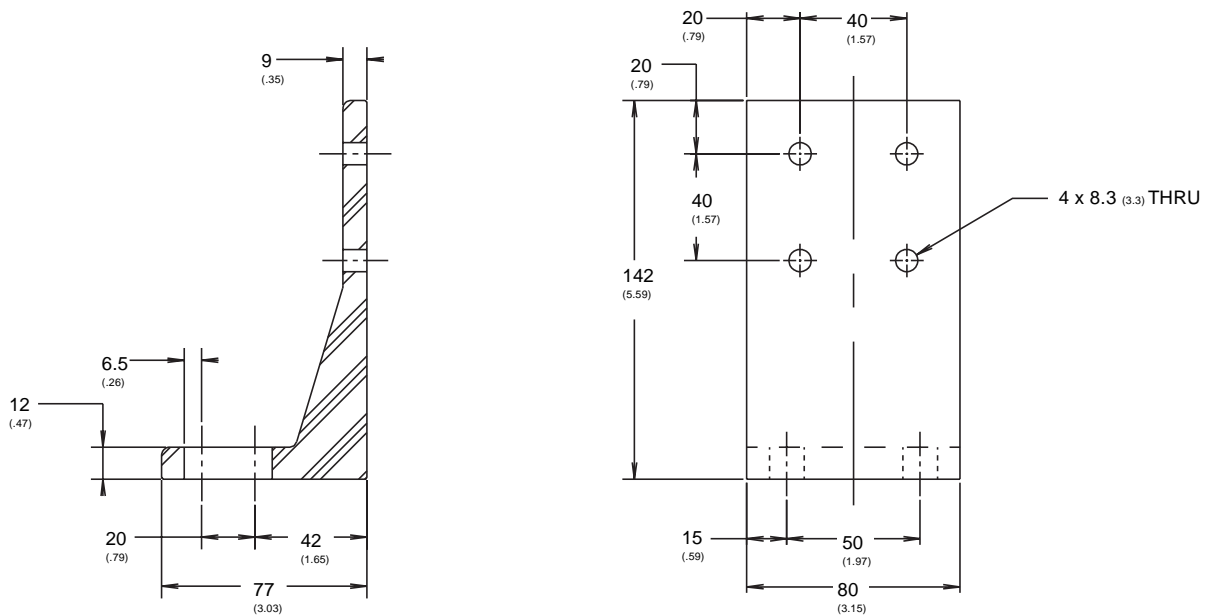


Dimensions

	A	B	C	D	E	F	G	H	J	K	L
ESA2810	9 (.35)	142 (5.59)	28 (1.10)	14 (.55)	40 (1.57)	20 (.79)	6.5 (.26)	12 (.47)	20 (.79)	42 (1.65)	77 (3.03)
ESA4010	9 (.35)	142 (5.59)	40 (1.57)	20 (.79)	40 (1.57)	20 (.79)	6.5 (.26)	12 (.47)	20 (.79)	42 (1.65)	77 (3.03)

D Floor

ESA8010



Note: All dimensions in mm (in)

Leveling Feet

Structural Framing System Floor Accessories

These levelers provide height adjustment for a structure. Swivel and economy styles are available.

Machining Required: Profiles can be pre-tapped if necessary. Refer to page G3.

Design Tip: Profiles cannot be pre-tapped for M12 foot. Separate base/anchor plate is required.

Note: ESV4040 and all 28 mm profiles can accept only an M8 foot. If a swivel foot is desired for these profiles, see page D5 for M8 swivel foot with friction pad.



Part No.	Description	Overall Length	Material	Weight	
				kg	lb
ESA0040	M10 x 50 mm with swivel	75	12L14 Hardened Steel, Zinc Plated	.10	.23
ESA0042	M12 x 50 mm with swivel	80	12L14 Hardened Steel, Zinc Plated	.23	.52
ESA0044	M8 x 40 mm	43	Carbon Steel, Zinc Plated	.02	.05
ESA0046	M10 x 50 mm	55	Carbon Steel, Zinc Plated	.05	.10
ESA0048	M12 x 50 mm	70	Carbon Steel, Zinc Plated	.07	.15

Base Plates

**Structural Framing System
Floor Accessories**

Base plates are used to mount leveling feet or king-pin mount casters to the bottom of an extrusion profile. The plate attaches to the tapped hole(s) in the end of the profile; a tapped center hole accepts the leveling foot or caster being mounted. The plate can also be used as a lifting point. In this case, the plate would be mounted to the top of an extrusion profile and an eye-bolt would be threaded into the center tapped hole of the plate for handling.

Material: 6061-T6 Aluminum Alloy, Clear Anodized

Machining Required: Base plates attach to tapped holes in the profile end. Refer to page G3.



Part No.	"A"	Profile	Weight		Tap Profile End Machining Service Part No.
			kg	lb	
ESA4000	M8	40 x 80	.11	.25	ESE0038
ESA4002	M10	40 x 80	.11	.25	ESE0038
ESA4004	M12	40 x 80	.11	.25	ESE0038
ESA8002	M10	80 x 80	.23	.50	ESE0040
ESA8004	M12	80 x 80	.22	.49	ESE0040
ESA8008	M20	80 x 80	.21	.48	ESE0040

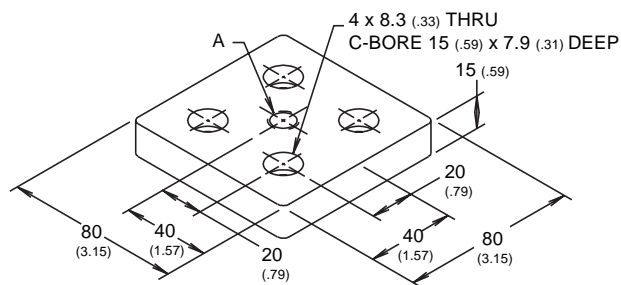


D Floor

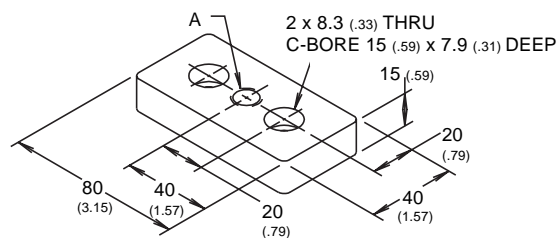
FASTENING SETS

Base Plate No.	Fastening Set No.
ESA4000 ESA4002 ESA4004	(2) ESF2542
ESA8002 ESA8004 ESA8008	(4) ESF2542

ESA8002, ESA8004, ESA8008



ESA4000, ESA4002, ESA4004



Note: All dimensions in mm (in)

Anchor Plates

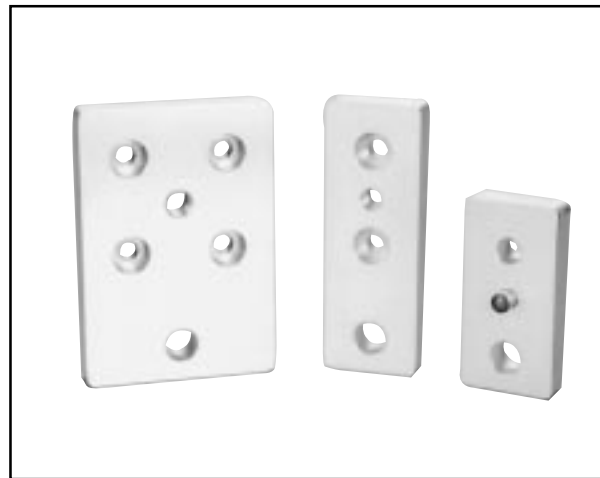
Structural Framing System Floor Accessories

Anchor plates are similar to base plates, with the addition of a thru-hole for anchoring the plate to the floor.

Material: 6061-T6 Aluminum Alloy, Clear Anodized

Part No.	"A"	Profile	Weight		Tap Profile End Machining Service Part No.
			kg	lb	
ESA4020	N/A*	40 x 40	.11	.25	ESE0036 or ESE0042
ESA4022	M10	40 x 80	.16	.35	ESE0038
ESA4024	M12	40 x 80	.16	.35	ESE0038
ESA8024	M12	80 x 80	.33	.72	ESE0040

* Thru hole will accept M8 or M10 leveling foot. Vertical post is also tapped to accept leveling foot.

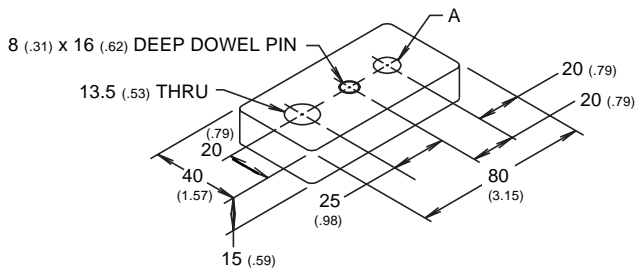


FASTENING SETS

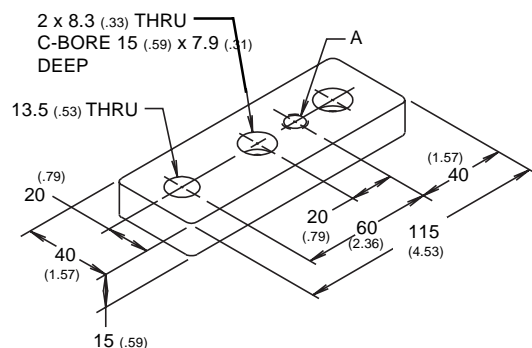
Base Plate No.	Fastening Set No.
ESA4020	(1) ESF2542
ESA4022 & ESA4024	(2) ESF2542
ESA8024	(4) ESF2542



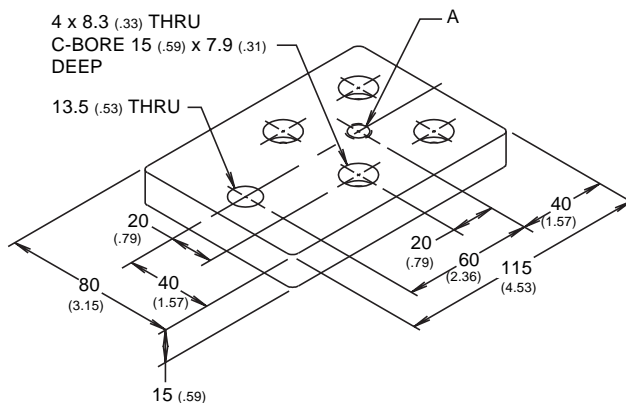
ESA4020



ESA4022 or ESA4024



ESA8024



Note: All dimensions in mm (in)

A corner anchor/leveling plate may be mounted at an angle between two horizontal profiles. This plate accommodates leveling feet, floor anchor bolts, king pin casters, etc.

Part No.: ESA0094

Material: 6061-T6 Aluminum Alloy, Clear Anodized

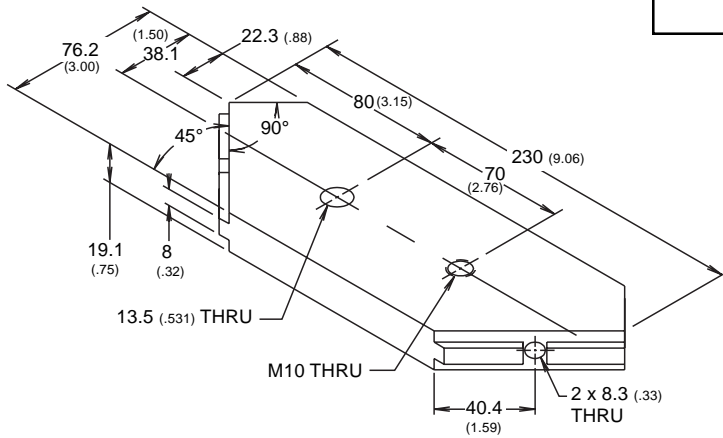
Weight: .48 kg (1.06 lb)

Note: Consult factory for use with 28 & 56 profiles.



FASTENING SET

Base Plate No.	Fastening Set No.
ESA0094	(2) ESF2544



Note: All dimensions in mm (in)

D Floor

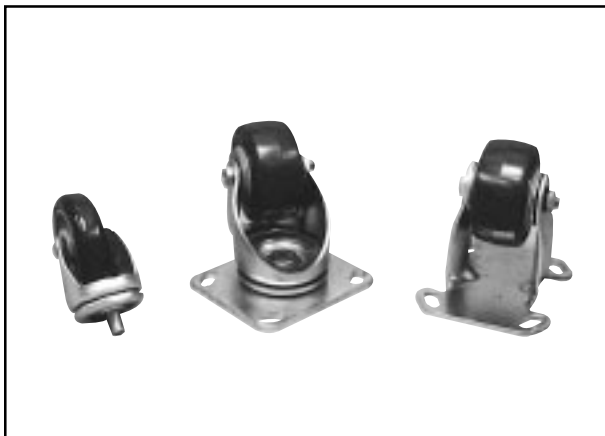
Casters

King Pin Casters: King-pin type swivel casters mount directly to a base plate or tapped profile end. An M10 hex head bolt is assembled in each caster. An optional brake kit is available.

Flange Mount Swivel and Rigid Casters: These mount to the end or side of an extrusion profile using a caster mounting plate. An optional brake kit is available.

Flange Mount Rigid Casters: These mount to the end or side of an extrusion profile using a caster mounting plate.

Wheel Material: Molded polyurethane



Type of Caster	Part No.	Wheel Diameter, cm (in)	Load Capacity per Caster, kg (lb)	Overall Height, cm (in)	Mounting Thread	Swivel Radius, cm (in)	Weight, kg (lb)
King Pin	ESA0050*	7.6 (3.00)	45.5 (100)	9.5 (3.75)	M10	6.7 (2.63)	.40 (.80)
King Pin	ESA0052*	12.7 (5.00)	63.6 (140)	14.6 (5.75)	M10	9.8 (3.88)	.60 (1.30)
Flange Mount Swivel	ESA0060*	7.6 (3.00)	136.4 (300)	11.4 (4.50)	—	7.9 (3.13)	1.40 (3.00)
Flange Mount Swivel	ESA0062*	12.7 (5.00)	181.8 (400)	16.5 (6.38)	—	13.0 (5.13)	1.70 (3.80)
Flange Mount Rigid	ESA0070	7.6 (3.00)	136.4 (300)	11.4 (4.50)	—	—	1.10 (2.50)
Flange Mount Rigid	ESA0072	12.7 (5.00)	181.8 (400)	16.5 (6.38)	—	—	1.50 (3..30)

*Order brake kit below.

BRAKE KITS

Caster	Brake Kit Part No.
ESA0050	ESA0056
ESA0052	ESA0054
ESA0060	ESA0066
ESA0062	ESA0064

Caster Mounting Plates

These plates are used to mount rigid and swivel type flanged casters.

Machining Required: Plates mounting to the profile ends require end tapping. See page G3.

Part No.	Description	Weight	
		kg	lb
ESA0080	For extrusion profile with double T-slot or 80 x 80 profile end	.25	.54
ESA0082	For extrusion profile with single T-slot	.25	.54

Structural Framing System Floor Accessories

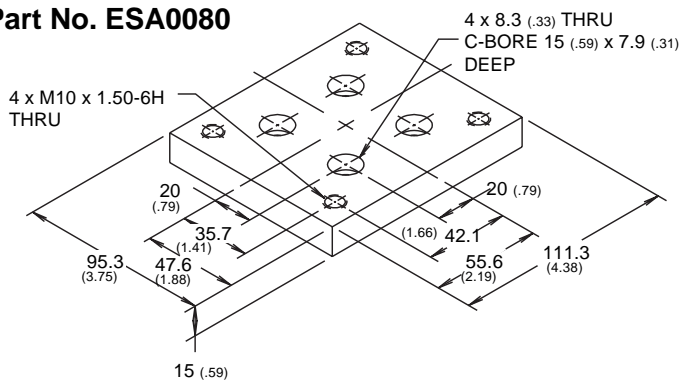


FASTENING SETS

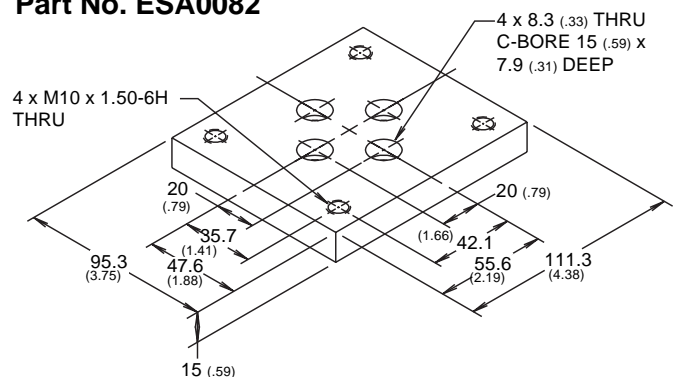
Part No.	Application	Fastening Set No.
ESA0080	Attachment to Profile End	(4) ESF2542
	Attachment to Profile with Double T-Slots	(4) ESF2544
ESA0082	Attachment to Profile with Single T-Slots	(2) ESF2544

D Floor

Part No. ESA0080



Part No. ESA0082



Note: All dimensions in mm (in)

