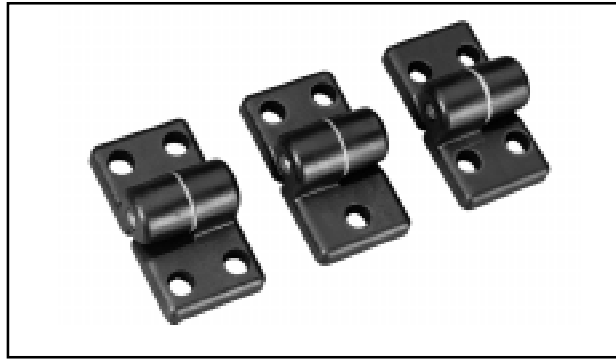


Lift-off hinges allow doors to be lifted off to provide access into a structure. Units mounted with the hinge pins pointing in the same direction will provide the lift-off feature. Units mounted with hinge pins pointed in opposite directions will hold a door captive. All fasteners included.

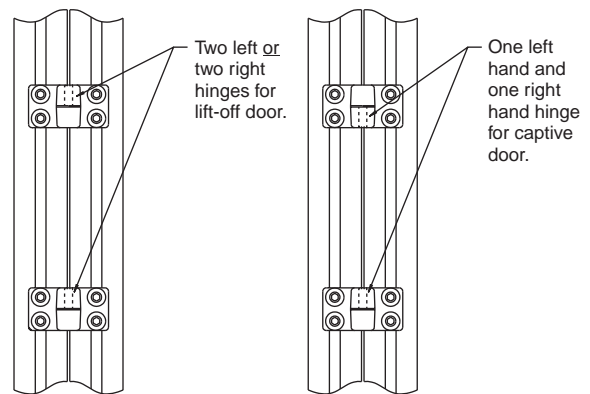
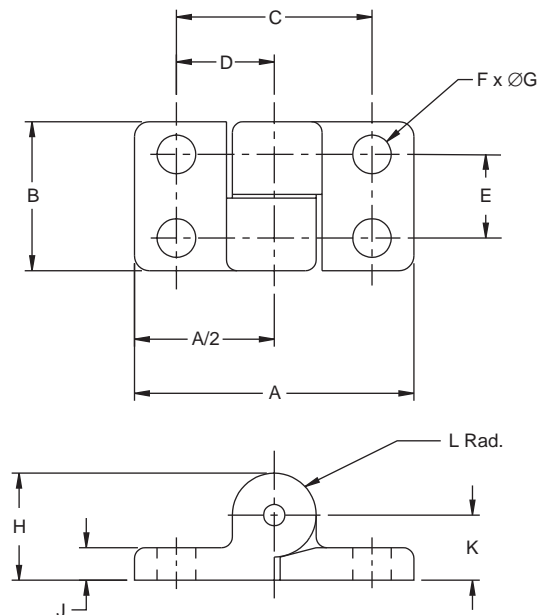
Material: ABS

Color: Black

Design Tip: Utilize only with doors smaller than 1 meter square (9 ft²).



Part No.	Profile Connection	Weight	
		kg	lb
ESA0200L	28 to All 28	0.06	0.13
ESA0200R	28 to All 28	0.06	0.13
ESA0202L	28 to All 40 & 80	0.08	0.18
ESA0202R	28 to All 40 & 80	0.08	0.18
ESA0204L	40 to All 40 & 80	0.07	0.16
ESA0204R	40 to All 40 & 80	0.07	0.16
ESA0206L	Panel to all Profiles	0.07	0.16
ESA0206R	Panel to all Profiles	0.07	0.16



Hinge Type	A	B	C	D	E	F	G	H	J	K	L
ESA0200	60 (2.36)	32 (1.26)	34 (1.34)	17 (.67)	18 (.71)	4	8.3 (.33)	23 (.91)	7 (.27)	14 (.55)	9 (.35)
ESA0202	60 (2.36)	32 (1.26)	38 (1.50)	21 (.83)	18 (.71)	4	8.3 (.33)	23 (.91)	7 (.27)	14 (.55)	9 (.35)
ESA0204	60 (2.36)	32 (1.26)	42 (1.65)	21 (.83)	18 (.71)	4	8.3 (.33)	23 (.91)	7 (.27)	14 (.55)	9 (.35)
ESA0206	60 (2.36)	32 (1.26)	42 (1.65)	21 (.83)	18 (.71)	3	8.3 (.33)	23 (.91)	7 (.27)	14 (.55)	9 (.35)

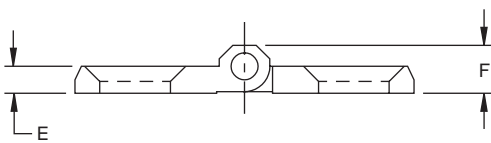
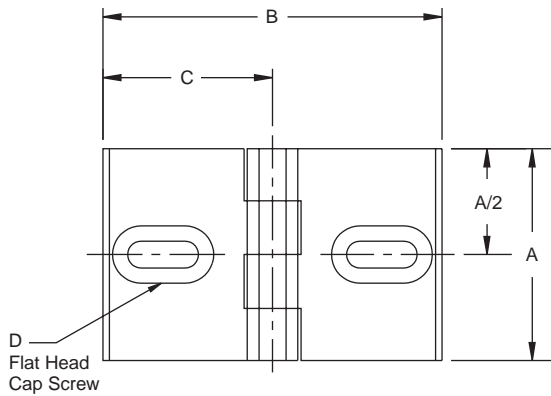
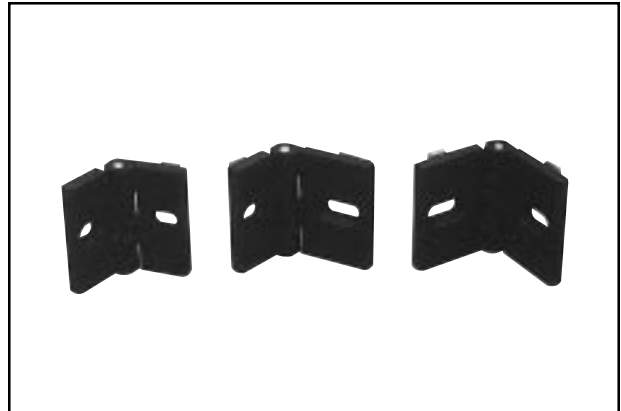
Note: All dimensions in mm (in)

These hinges have slotted mounting holes for adjustment. Press-in blocks allow a variable "gap". All fasteners included.

Material: Zinc Die Casting

Color: Black

Part No.	Profile Connection	Weight	
		kg	lb
ESA0108	28 to All 28	0.11	0.24
ESA0110	28 to All 40 & 80	0.13	0.28
ESA0112	40 to All 40 & 80	0.14	0.31



Part No.	A	B	C	D	E	F
ESA0108	50 (1.97)	56 (2.20)	28 (1.10)	M6	6.4 (.25)	11.3 (.44)
ESA0110	50 (1.97)	68 (2.68)	40 (1.57)	M6	6.4 (.25)	11.3 (.44)
ESA0112	50 (1.97)	80 (3.15)	40 (1.57)	M6	6.4 (.25)	11.3 (.44)

Note: All dimensions in mm (in)

C Enclosure

Upper/Lower Panel Track

This track acts as a guide for 6 mm (.25 in) panels. The upper track has deeper slots so that a panel can be installed after assembling the frame.

Length: 150 cm (60 in)

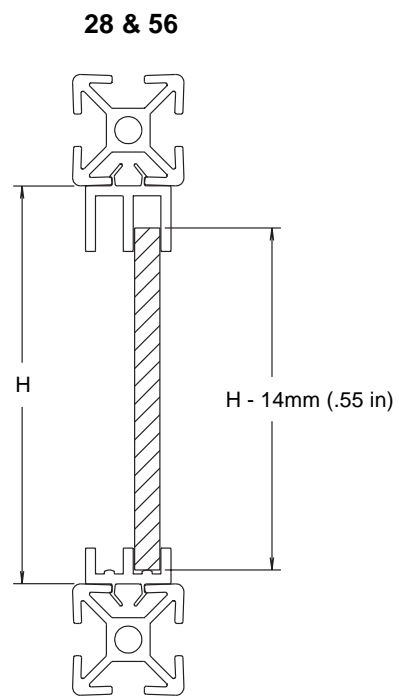
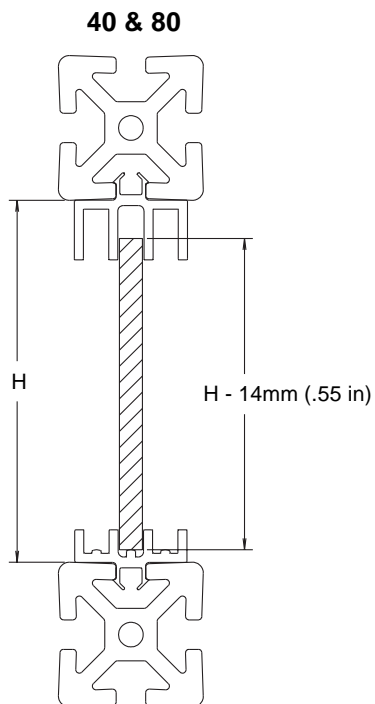
Material: High Impact Rigid PVC

Color: Black

Design Tip: A panel may be lifted out of the track if the spacing between profiles exceeds the panel distance by 14mm. Shorter spacing will cause the panels to be held captive.



Part No.	Description	Profile
ESA0006-28	Lower	28
ESA0008-28	Upper	28
ESA0006	Lower	40 & 80
ESA0008	Upper	40 & 80

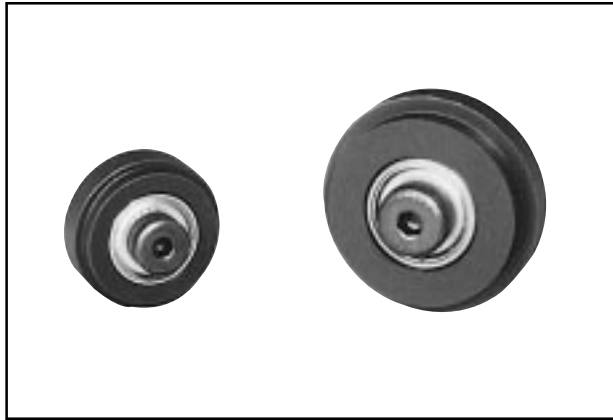


Note: All dimensions in mm (in)

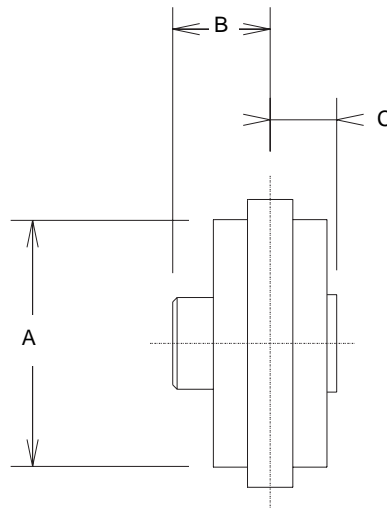
Roller wheels are used to provide guided linear motion. The wheel mounts to a profile end or T-slot, and rolls in the mating profile's T-slot. The roller wheels are fitted with sealed ball bearings to provide for a smooth frictionless motion. All fasteners are included.

Material: Black Nylontron

Part No.	Profile	Maximum Load Per Wheel	
		kg	lb
ESA0130	28	11	24
ESA0132	40 & 80	15	33



	A	B	C
ESA0130	31 (1.221)	13.7 (.54)	8.0 (.31)
ESA0132	43 (1.693)	33.0 (1.30)	10.0 (.39)



Note: All dimensions in mm (in)

C Enclosure

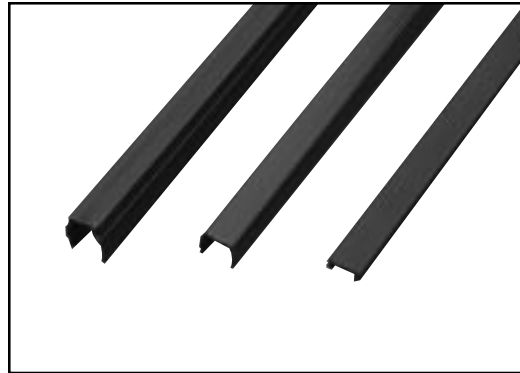
Black T-Slot Covers

Inserting this cover into a T-slot prevents dirt or debris from collecting in the slot.

Length: 150 cm (60 in)

Material: High Density Polyethylene

Part No.	Color	Profiles
ESA0002	Black	28 & 56
ESA0004	Black	40 & 80
ESA0005	Black	28,56,40,80



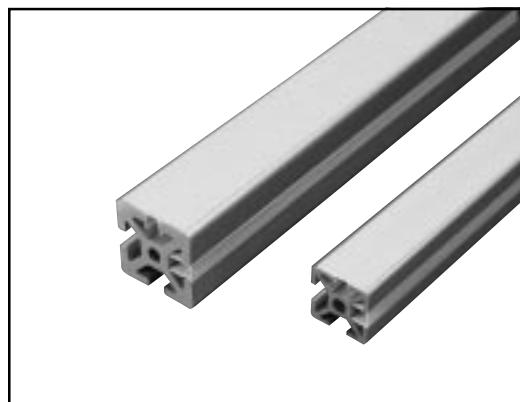
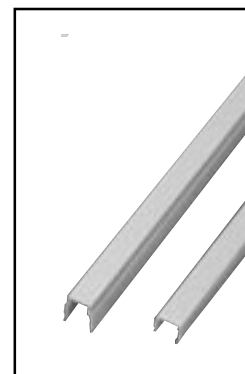
Yellow T-Slot Covers

These bright covers provide high visibility in guarding applications. Inserting this cover into a T-slot prevents dirt or debris from collecting in the slot.

Length: 150 cm (60 in)

Material: PVC

Part No.	Style	Profiles
ESA0002-Y	Narrow	28 & 56
ESA0004-Y	Narrow	40 & 80



End Caps

End caps are used for covering extrusion profile ends to eliminate deburring. They may be mounted extended or flush. Order push-in fasteners separately below.

Material: High-Impact Plastic

Color: Black

Design Tip: End caps can be positioned flush to improve appearance.

Part No.	Profile No.	Holes
ESC2828	ESL2828	1
ESC4040	ESL4040 & ESH4040	1
ESC4080	ESL4080 & ESH4080	2
ESC8080	ESH8080	4

RECOMMENDED FASTENER

(Quantity is determined by the number of holes in end cap)

Part No.	Description
ESF0030	Push-in Fastener for all end caps

